

# digital PA



## Help Points

Help Points offer commuters or other users the ability to contact the Network Operations Centre and talk with an operator or listen to automated information messages. These points can offer vital information so quality audio and performance reliability are a top priority.

The Help Point systems are totally configurable, for example buttons could be configured to play announcements in different languages etc. They are suitable for public locations where help points or information points are required, including transportation hubs, railway signal points, road assistance points and many more locations.

## Features

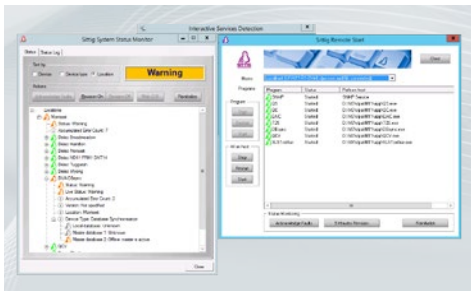
- **VoIP integration to the PBX, CNMS and DVA**
- **1 to 8 button operation (one for help and one for information)**
- **IP 65 water resistant**
- **PoE Powered**
- **Includes Induction Loop for hearing assistance**
- **Customised housings available**
- **Noise cancelling microphone**

### PRODUCTS INCLUDE:



### IP PBX

IP PBX integration is included in these systems for paging, information and help point communication. This technology takes advantage of the benefits of allowing audio and control to travel over the same IP network.



### DVA

Automatic Digital Voice announcement systems are perfect for the transport industry. Incorporating a web-based GUI that is easy to operate, multiple languages and text to speech announcements, DVA offers the very best in public address technology. These systems also incorporate full API and GTFS/GTFS-R support, are rolling stock certified and offer 128 zones per server.

**dataminer**  
by skyline communications

### CNMS

A CNMS featuring DataMiner offers a complete professional environment to manage more efficiently and intelligently than ever before. DataMiner offers a wealth of functionality including unlimited remote web access, fault management, email and SMS notification, performance management, professional reporting, advanced automation, intelligent correlation and root cause analysis, service management, real-time SLA monitoring and user-definable KPI dashboards.